

# Labour force survey before and after Census 2011

Andris Fisenko

Central Statistical Bureau of Latvia

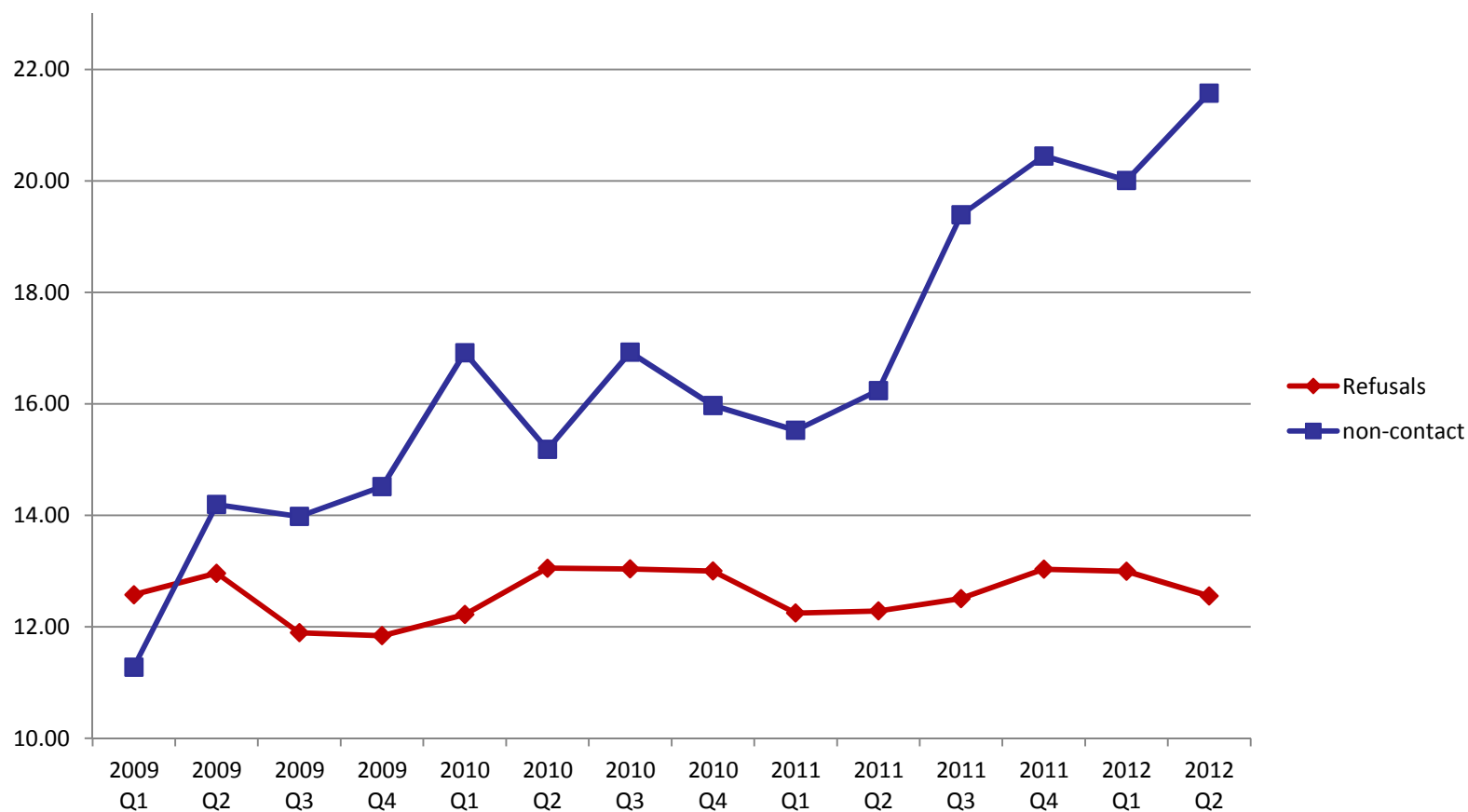


# Labour Force Survey (LFS)

- Quarterly Accuracy Report (CV)
  - Number of employed persons;
  - Number of part-time employed persons;
  - Number of unemployed persons;
  - Rate of unemployment;
  - Average actual hours of work per week.
- Rate of non-response (%)
  - Total;
  - Refusal;
  - Non-contact;
  - Other.

# Labour Force Survey (LFS)

Nonresponse 2009-2012 q2



# LFS before Census 2011

- Census 2000
- The Population Register
- Calibration

About LFS: The Population register is updated 4 time in year; Sample size selected each quarter; 2007 sample size increase 2.2 times and start all over with new rotation schema; 2010 renew PSU. 2012 start taken into account persons living in collective households.

# LFS after Census 2011

- Census 2011
- The Population Register?
- Persons in collective households
- Non-response

# Auxiliary information

## Before

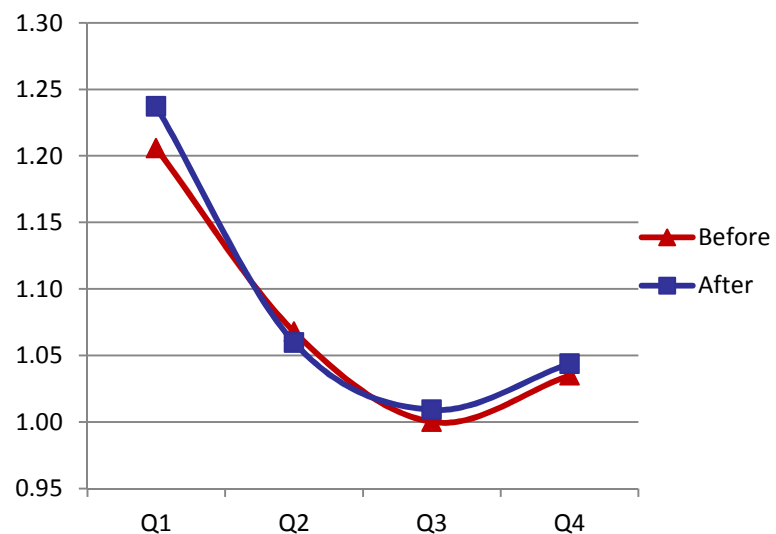
- Population – 2 229 641
- Persons 15-74 – 1 754 273
- Persons living in collective households – ( ----- )

## After

- Population – 2 074 605
- Persons 15-74 – 1 620 060
- Persons living in collective households – 24 754

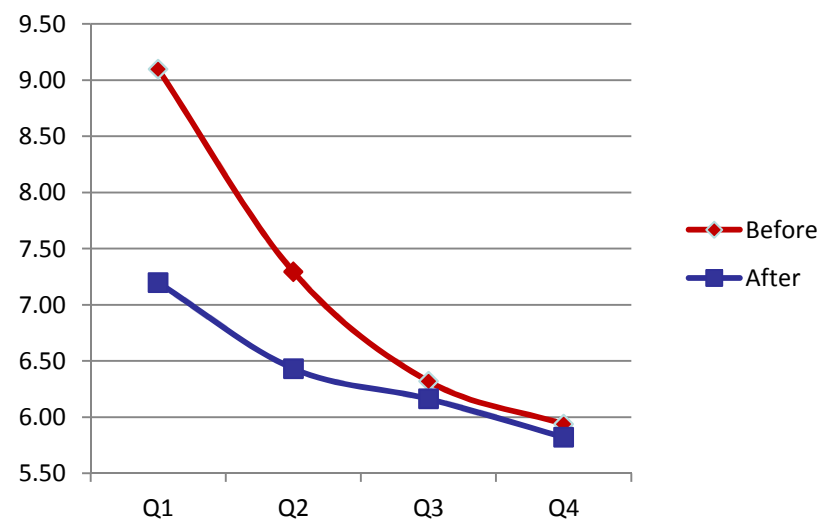
# Results (1)

Coefficient of variation for the number of employed persons



Before	1.21	1.07	1.00	1.03
After	1.24	1.06	1.01	1.04
	Q1	Q2	Q3	Q4

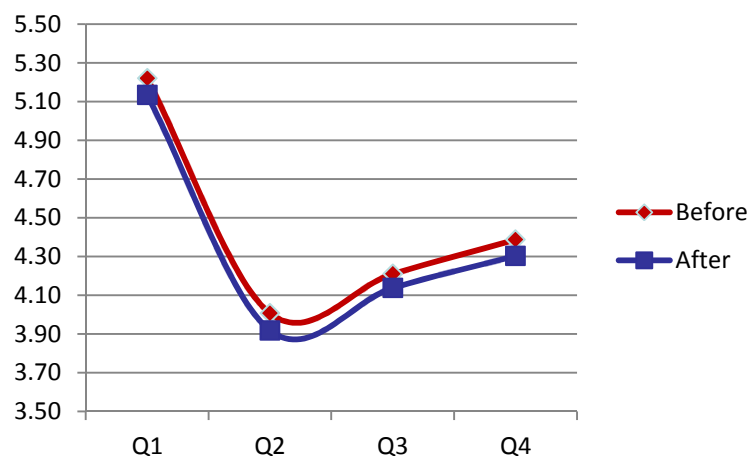
Coefficient of variation for the number of part-time employed persons



Before	9.10	7.29	6.32	5.94
After	7.20	6.43	6.16	5.82
	Q1	Q2	Q3	Q4

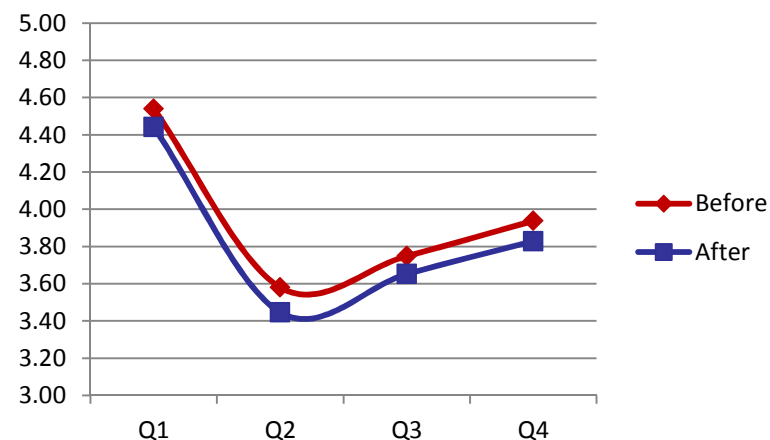
## Results (2)

Coefficient of variation for the number of unemployed persons



Before	5.22	4.01	4.21	4.39
After	5.13	3.92	4.14	4.30
	Q1	Q2	Q3	Q4

Coefficient of variation for the rate of unemployment

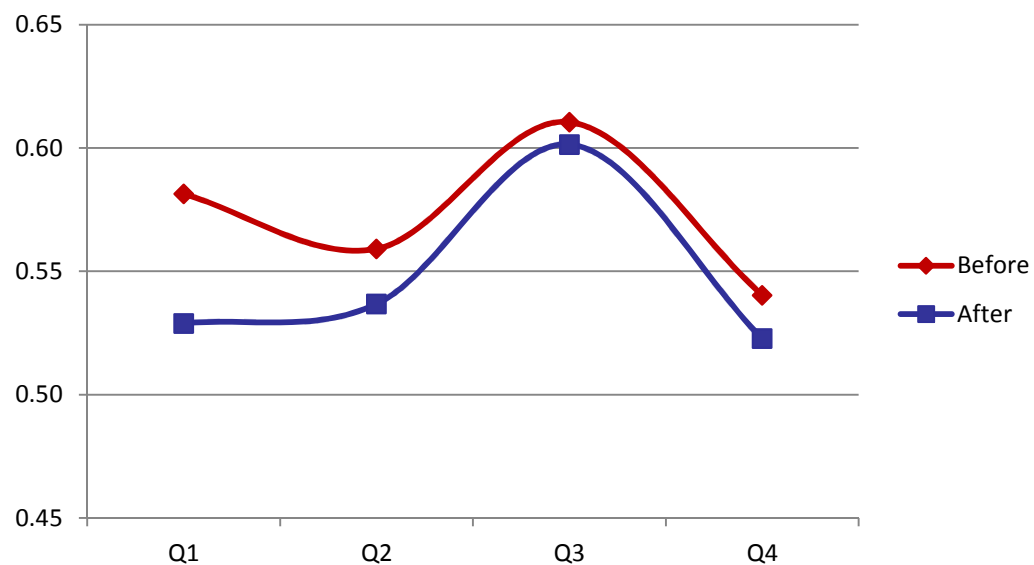


Before	4.54	3.58	3.75	3.94
After	4.44	3.45	3.65	3.83
	Q1	Q2	Q3	Q4




## Results (3)

Coefficient of variation for the average actual hours of work per week



Before	0.58	0.56	0.61	0.54
After	0.53	0.54	0.60	0.52
	Q1	Q2	Q3	Q4

## Conclusion

- 4 from 5 accuracy report CV after Census 2011 show better results.
  - 2001 – 2010;
  - 2011 – OK, 2012 – OK,
  - 2013 – ? (number of population, number of persons living in collective households)
- 

**Thank you for your attention!**