

Template for contributed paper

Mārtiņš Liberts¹ and Andris Fisenko²

¹University of Latvia, e-mail: martins.liberts@gmail.com

²Central Statistical Bureau of Latvia, e-mail: andris.fisenko@csb.gov.lv

Abstract

A short abstract is nice at the beginning of the text to describe the contents and main results of the paper.

Keywords: Workshop, template, contributed paper

1 Introduction

This is the Microsoft Word template of a contributed paper or lecture for the Workshop of Baltic-Nordic-Ukrainian Network on Survey Statistics 2012 in Valmiera, Latvia. The length of the contributed paper should be 4-8 pages. Do not put page numbers.

Please use the styles defined in the template. There are 13 styles defined – Abstract, Abstract Title, Affil, Authors, Figure Table Title, Formula, Heading 1, Heading 2, Keywords, Normal, Reference, Table and Title.

2 Formatting

2.1 Equations

The equation numbers should be given at the right-hand side, if referred:

$$\hat{t}_{\pi} = \sum_s \frac{Y_k}{\pi_k} \quad (1)$$

2.2 Citations

The citations in the text should be given according to the Harvard System.

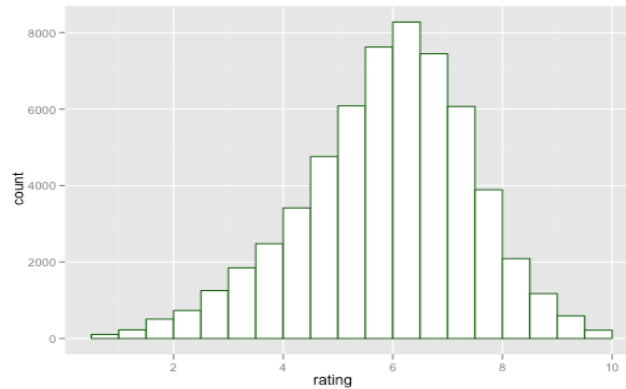
We consider the well-known estimator for the population total defined by by Särndal *et al.* (2003, p. 42). The estimator (1) is also discussed by Ardilly & Tillé (2006). Alternative expression of (1) is $\hat{Y}_{\pi} = \sum_{k \in S} \frac{Y_k}{\pi_k}$ (Ardilly & Tillé, 2006).

This is a textual citation of the book by Särndal *et al.* (2003). This is a parenthetical citation (Särndal *et al.*, 2003). This is a citation of the article in a journal (Lavallée & Rivest, 2012).

2.3 Graphics and Tables

Please add titles for graphics and tables.

Figure 1: A histogram



A histogram drawn by the R package *ggplot2* (Wickham, 2009).

Table 1: A simple table

1	2	3
4	5	6

References

- Ardilly, P. & Tillé, Y. (2006). *Sampling methods: exercises and solutions*. Springer Verlag.
- Lavallée, P. & Rivest, L.-P. (2012). Capture–recapture sampling and indirect sampling. *Journal of Official Statistics* **28**, 1 - 27.
- Särndal, C., Swensson, B. & Wretman, J. (2003). *Model assisted survey sampling*. Springer Verlag.
- Wickham, H. (2009). *ggplot2: elegant graphics for data analysis*. Springer New York.